

# WELCOME TO WOODCREEK BEND



## EXCEPTIONAL MEMORY CARE

Welcome to Memory Care at **WOODCREEK BEND**. Peace of mind and a loving commitment to care is what your family and loved ones will find in abundance in our special Memory Care community. We know each Resident comes to us with unique needs, and we serve as an extension of family to provide exceptional care and a purpose-filled lifestyle for those you love.



## WHERE EVERY RESIDENT IS UNIQUELY SPECIAL

Our specially trained memory care team gets to know your family member's life story, so we better understand how to encourage and connect with them on a daily basis. Our dedicated and exclusive SYMPHONY OF LIFE® program engages the body, heart and mind with activities that bring purpose to each day.

SYMPHONY OF LIFE® is a registered trademark of 12 Oaks Senior Living

## DIGNIFIED DAILY HELP

- 24-hour care and oversight
- Promote Resident's sense of dignity and well-being
- Routine assistance with activities of daily living
- 24-hour Staff Response System
- Thorough screening, assessment and plan of care
- Medication management and pharmacy services
- Schedule of diverse and stimulating activities/entertainment
- Healthy meals served restaurant style, with varied menus
- Scheduled transportation
- Housekeeping and laundry services

**WOODCREEK BEND** embraces a Person-Centered model of care which allows us to develop a custom-tailored Resident Plan that supports individual interests and abilities. Residents build on their strengths through fitness classes, music, creative arts and leisure activities. Our satisfaction comes from knowing we've met or exceeded the quality of care Residents expect and deserve.

**WOODCREEK  
BEND**  
MEMORY CARE  
*A Place Where Seniors Thrive*

1820 WOODCREEK BEND LANE  
KATY, TX 77494

WoodCreekBend.com  
281-347-4450

ALF# 105512



## OUR REWARDING LIFESTYLE



Each day at **WOODCREEK BEND** is filled with purpose and meaningful activities to engage our Residents.

### A PURPOSE-FILLED LIFESTYLE EVERY DAY

Every day at **WOODCREEK BEND** has the warmth and welcoming environment of family. It's that approach to life that makes living in our community so special. Of course, we're also very proud of the many wonderful features we have to offer Residents, such as:

- Special social gatherings
- A vibrant calendar of daily events and activities
- Homestyle dining
- An emphasis on peace of mind and worry-free living
- Planned excursions
- Classes for the arts and creative expression
- Senior-friendly fitness classes
- Concierge services

### SAMPLE ACTIVITIES

- Variety of music and entertainment
- Special guest speakers
- Movie matinees
- Engaging social outings
- Discussion and study groups
- Religious services
- Special family events and dinners
- Cultural events

When your family is going through this next stage of life transition, it's great to know that every day has the potential to be better than the one before. At **WOODCREEK BEND**, every day has something to celebrate.



**WOODCREEK  
BEND**

MEMORY CARE

*A Place Where Seniors Thrive*

1820 WOODCREEK BEND LANE  
KATY, TX 77494

WoodCreekBend.com

281-347-4450

ALF# 105512



# AMENITIES & SERVICES

## A PLACE TO THRIVE

**WOODCREEK BEND** offers an intimate setting with charming landscaped areas and common spaces, like the one to the right, that are perfect for friendly visits or playing games. We invite your loved one to experience the peace of mind and worry-free lifestyle that our community provides. Our 24-hour Personal Care Staff is committed to serving the needs of our Residents. That's our privilege and delight.



## A COMMUNITY BUILT ON CONNECTIONS

Life is enhanced by the connections we make, and there are a wealth of opportunities for social engagement at **WOODCREEK BEND**. We also provide transportation for group excursions and off-site outings, where friends are made and new experiences are enjoyed.



## AMENITIES

- Nutritious, chef-prepared meals
- Life enrichment activities and off-site outings
- Transportation for group excursions and individual appointments
- Resident Care provides seamless personalized care
- On-site beauty/barber shop
- Beautifully landscaped courtyard
- Patio seating and tables
- Planter boxes
- Outdoor gardening
- Indoor ElderGrow garden
- Pets welcome policy
- Activity and game room

## DISTINCTIVE SERVICES

- 24/7 Personal Care staff
- Medication management
- Concierge services
- Planned social programs
- Scheduled transportation
- Housekeeping
- Laundry services
- Family nights and dinners
- Diverse social programming
- Community events
- SingFit music therapy

# DINING SERVICES



## HEALTHY, HOME-STYLE DINING

Let the aroma of Rotisserie Chicken and Egg Noodle Soup or Herb Grilled Asparagus or Banana Pudding Pie whet your appetite for what is undoubtedly a favorite, if not the favorite feature of our community for Residents... our Southern hospitality inspired dining experience.



### SAMPLE DINNER MENU

#### Breaded Baked Fish

Norwegian cod fish lightly breaded in crushed buttered crackers with our house made caper tartar sauce over wild rice pilaf with steamed fresh snow peas

#### Slow Cooked Pot Roast

Tender prime cut of beef slow roasted with peppered beef gravy served with skin-on red bliss potatoes and seasoned broccoli florets



#### Apricot-Ginger Glazed Ham

Apricot and ginger infused glazed ham with savory sweet potato sauté and garlic wilted spinach

#### Sweet Tea Brined Grilled Chicken

The South rises from the grill with this melt-in-your-mouth chicken served with caramelized onion scalloped potatoes and minted steamed peas

#### Dessert of the Day

Freshly Baked Cherry Pie Angel Food Cake with Fresh Fruit

#### Beverages

Fresh-brewed Coffee, Decaffeinated Coffee or Tea, Iced Tea, Lemonade, Fruit Juices

**WOODCREEK BEND** takes great pride in offering nutritiously balanced and themed dinner menu choices with our ever-attentive dining service. Bon Appétit!

## YOU ARE INVITED

Join us for a complimentary meal and tour of our beautiful community!

**WOODCREEK BEND**  
MEMORY CARE

*A Place Where Seniors Thrive*

**1820 WOODCREEK BEND LANE  
KATY, TX 77494**

WoodCreekBend.com

281-347-4450

ALF# 105512

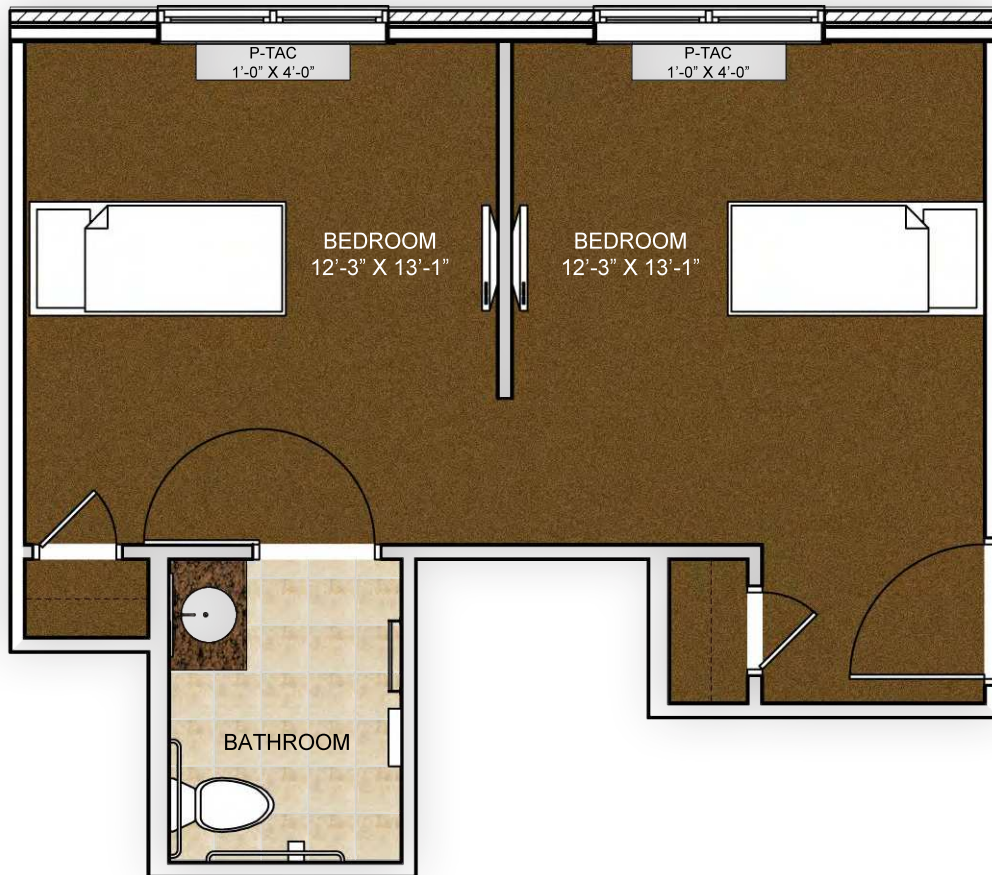


## FLOOR PLANS

# SEMI-PRIVATE

TWO BEDROOMS, HALF BATH

160 Square Feet



### APARTMENT FEATURES

- 24-hour assistance and on-site Resident Care Director
- Individually-controlled heat and air conditioning
- Cable TV ready
- Carpet/vinyl flooring
- Half bath
- Maintenance-free
- Daily spruce ups
- Weekly housekeeping
- Weekly laundry service
- Personal closet
- Linen storage
- Open feel with natural light

**WOODCREEK  
BEND**  
MEMORY CARE

*A Place Where Seniors Thrive*

**1820 WOODCREEK BEND LANE  
KATY, TX 77494**

WoodCreekBend.com

281-347-4450

ALF# 105512



## FLOOR PLANS

# PRIVATE HALF BATH

ONE BEDROOM, HALF BATH

210 Square Feet



### APARTMENT FEATURES

- 24-hour assistance and on-site Resident Care Director
- Individually-controlled heat and air conditioning
- Cable TV ready
- Carpet/vinyl flooring
- Half bath
- Maintenance-free
- Daily spruce ups
- Weekly housekeeping
- Weekly laundry service
- Personal closet
- Linen storage
- Open feel with natural light

**WOODCREEK  
BEND**  
MEMORY CARE

*A Place Where Seniors Thrive*

**1820 WOODCREEK BEND LANE  
KATY, TX 77494**

WoodCreekBend.com

281-347-4450

ALF# 105512



## FLOOR PLANS

# PRIVATE FULL BATH

ONE BEDROOM, FULL BATH

220 Square Feet



### APARTMENT FEATURES

- 24-hour assistance and on-site Resident Care Director
- Individually-controlled heat and air conditioning
- Cable TV ready
- Carpet/vinyl flooring
- Walk-in shower
- Maintenance-free
- Daily spruce ups
- Weekly housekeeping
- Weekly laundry service
- Personal closet
- Linen storage
- Open feel with natural light

**WOODCREEK  
BEND**  
MEMORY CARE

*A Place Where Seniors Thrive*

**1820 WOODCREEK BEND LANE  
KATY, TX 77494**

WoodCreekBend.com

281-347-4450

ALF# 105512



## FLOOR PLANS

# PRIVATE COURTYARD

ONE BEDROOM, FULL BATH, COURTYARD VIEW

245 Square Feet



### APARTMENT FEATURES

- 24-hour assistance and on-site Resident Care Director
- Individually-controlled heat and air conditioning
- Courtyard view
- Cable TV ready
- Carpet/vinyl flooring
- Walk-in shower
- Maintenance-free
- Daily spruce ups
- Weekly housekeeping
- Weekly laundry service
- Personal closet
- Linen storage
- Open feel with natural light

**WOODCREEK  
BEND**  
MEMORY CARE

*A Place Where Seniors Thrive*

**1820 WOODCREEK BEND LANE  
KATY, TX 77494**

WoodCreekBend.com

281-347-4450

ALF# 105512





## HELPFUL FUNDING RESOURCES

**WOODCREEK BEND** understands many of the financial considerations and challenges that seniors and their families face when considering a transition from residential housing into a senior living community. To help you explore alternative financing sources, here are helpful ideas to assist seniors in transition:

### Unsecured Loan

This can be an effective way to provide immediate funds to pay the up-front and continuing costs of a senior living community prior to the sale of a senior's home. Working much like a bridge loan or cash advance from a credit card, the loan, once approved, is set up like a line of credit in amounts ranging from \$3,000 to \$50,000. Families determine how much is needed each month, and then funds are transferred directly to the bank account of the senior community. Terms for repayment vary.

### Veteran Services

The Veterans Administration can provide wartime veterans and surviving spouses of wartime veterans with a special monthly pension benefit called Aid and Attendance, which can be used to defray some of the costs of living in a Memory Care community. For more information, please visit: [www.benefits.va.gov/pension](http://www.benefits.va.gov/pension)

### Long-Term Care Insurance

Helps provide for the cost of long-term care beyond a predetermined period and is generally not covered by health insurance, Medicare, or Medicaid.

***Check with your insurance company or agent about coverage you may be eligible to receive.***

### Life Settlements

Funds for senior housing and long term care can also be raised through the Life Settlement market. In short, a Life Settlement is the sale of an in-force life insurance policy, while the policy owner is still alive, for an amount much greater than the typical cash surrender value. The process is straightforward and typically takes 30 to 60 days to complete. A Life Settlement may be an attractive alternative to the rushed sale of a home or the liquidation of a more dearly held asset at a time of transition.

## PREFERRED PROVIDERS

**WOODCREEK BEND** can provide you with a list of preferred providers or referrals for many of these funding resources. As with any funding decision, we encourage you to seek guidance from your financial advisor.

**For more information, contact our leasing office: 281-347-4450**



*A Place Where Seniors Thrive*

**1820 WOODCREEK BEND LANE  
KATY, TX 77494**

WoodCreekBend.com

281-347-4450

ALF# 105512



# FEE SCHEDULE

## EXCEPTIONAL MEMORY CARE YOU CAN TRUST

**WOODCREEK BEND** offers several apartment options designed to fit the individual needs of our Residents. Our approach to Memory Care centers on the creation of a reassuring and stable living environment.

### BASE FEES INCLUDE:

- Comfort of 24-hour Staff
- Scheduled transportation
- Restaurant style dining
- Medication supervision
- Maintenance-free living
- Vibrant social programming
- Weekly housekeeping and laundry
- Basic Cable TV in common areas
- All utilities (except phone, cable, wifi)
- Enjoyment of all the features, activities and amenities of our wonderful community



## Memory Care for Your Family's Peace of Mind

Our **WOODCREEK BEND** staff works very closely with your family to ensure we provide the best care for your loved one. Together, we'll conduct an assessment to create a personal Service Plan to meet the unique needs of your family member. These services may include medication assistance, support with activities of daily living such as dressing, bathing, grooming, escort assistance, dining assistance, transfer assistance, prompting, redirecting, ambulation assistance, and incontinence care\*. WoodCreek Bend prides itself on being an "Aging in Place" community, which allows our Residents to age with dignity and grace.

## Memory Care Apartments

### Apartment Style

### Starting at

Semi-Private	\$3,200
Private with Half Bath	\$4,100
Private with Full Bath	\$4,400
Private with Full Bath and Courtyard	\$4,850



*All rates subject to change without notice.*

*\* Ancillary packages including charge for incontinence products are available.*



**WOODCREEK  
BEND**  
MEMORY CARE  
*A Place Where Seniors Thrive*

1820 WOODCREEK BEND LANE  
KATY, TX 77494

WoodCreekBend.com

281-347-4450

ALF# 105512

